

# **An analysis of the relationship between dyslexia, risk perception and 401(k) allocation decisions**

Daria Newfeld  
Dominican University

## **ABSTRACT**

Recent behavioral research has documented that factors such as representativeness, overconfidence, loss aversion, naiveté, wealth, age and gender all impact a person's risk perception and asset allocation decisions. Through the use of a simulated 401(k) asset allocation exercise, this preliminary case study examines whether dyslexia, a specific learning disability which is neurobiological in origin, influences these critical investment decisions.

Keywords: Investment, Behavioral Finance, Neuro Finance, Dyslexia, Learning Disabilities

J B

S B

Copyright statement: Authors retain the copyright to the manuscripts published in AABRI journals. Please see the AABRI Copyright Policy at <http://www.aabri.com/copyright.html>.

## INTRODUCTION

In recent years, following the decline in popularity (and for many firms, the financial feasibility of) defined benefit retirement plans, 401(k) plan allocations have become one of the primary financial decisions faced by working individuals in the United States. As of 2001, 45 million Americans held 401(k) plans totaling \$1.75 trillion in assets (Holden and VanDerhei, 2001). In light of the importance of these decisions it is interesting to investigate how investors make these allocation decisions. According to the traditional finance paradigm, these investors, acting as perfectly rational, risk adverse, utility maximizing agents in a perfect market with no transaction costs or informational asymmetries will select the optimal portfolio by simultaneously minimizing risk and maximizing return. Unfortunately, we do not live in this perfect world; instead as the field of behavioral finance has shown, market frictions, both economic and emotional, influence our decisions. Behavioral research has documented that biases such as representativeness, overconfidence and fear can influence an investors risk perception; while, factors such as gender, naivety, regret and loss aversion can influence asset allocation decisions.

In general, financial theory holds that people make investment decisions by analyzing the risk of an investment alternative, and then deciding whether or not to purchase the asset based on their risk tolerance and/or the degree to which the asset will provide a diversification benefit for their current portfolios. Therefore, an individual's risk perception plays a key role in his/her investment decisions. Representativeness is an over-reliance on stereotypes. This bias causes investors to view recent trends as representative of the underlying process and thus form inaccurate expectations and risk perceptions. The representativeness bias has been shown to contribute to inaccurate assessments of investment value and risk (De Bont and Thaler, 1985; Shefrin and Statmen, 1995). Anchoring is a related bias whereby people rely too heavily on one piece of available information and fail to accurately update their expectations as new information becomes available. De Bont (1993) used this heuristic to explain why investor's forecasts of an assets value tend to center around their initial purchase price. Overconfidence has also been shown to impact risk perception. The overconfidence bias is the tendency for people to overvalue their own knowledge, abilities and contributions. This heuristic can lead investors to underestimate risk and overestimate their ability to beat the market (Daniel et al., 1998) Psychology literature has long held that women tend to be more risk adverse than men (Byrnes, 1999). With respect to financial decisions, Olsen and Cox (2001) found that female finance professionals (CFAs and CFPs) placed greater weight on downside risk than did their male colleagues. They also documented that women appear to be more sensitive to ambiguity and uncertainty with respect to their investments. While the impact of downside risk is heightened in women, its influence is not limited to them alone. Koonce et al. (2004) find that higher potential loss outcomes lead to greater risk perceptions.

Just as risk perception can be influenced by behavioral biases, so too can asset allocation. Sunden and Surette (1998) found that women hold a larger proportion of their retirement portfolios in lower risk assets. Wang (1994) documented that as a consequence of this belief, financial advisors often steer their female clients towards less risky investments. Naivety is another oft sighted determinant of asset allocation. It is a common assumption that it is preferable to hold a "diversified portfolio," but since the ability to effectively choose such a portfolio eludes many, they naively diversify by dividing their funds evenly across the available asset choices. This phenomena has been studied by Benartzi and Thaler (2001) and Hubner and Jiang (2006). Regret and loss aversion have also been shown to influence investment selection. According to prospect theory,

investors weigh losses twice as much as gains of a similar magnitude and thus will attempt to avoid the regret associated with a loss (Kahneman and Tversky , 1979, 1992; Shefrin, 2002).

As this brief in summary indicates behavioral finance can be divided into two broad lines of research both of which highlight the intersection of finance and psychology. One aspect of the behavioral finance literature explores irrationalities that are common to all investors. Example in this strain include: anchoring, representativeness, over confidence and the other biases discussed above. The second line of inquiry examines the differences between groups for example, sophisticated versus naive investors, and gender differences. This paper belongs to the second category of the behavioral finance literature.

This paper expands upon this strain of literature by examining how dyslexia, a specific learning disability which impacts a person's capacity to successfully interpret and perform both written and mathematical functions, is related to the risk perception and allocation decisions of afflicted individuals. This preliminary study attempted to answer this question by comparing the results of a simulated 401(k) investment allocation exercise across a matched sample of dyslexic and mainstream subjects. Subjects were given "info sheets" for the asset allocation choices similar to those provided by a firm's HR department. The subjects were asked to judge the risk of each investment alternative and select their optimal asset allocation from the list provided. The main hypothesis being tested is that while dyslexics may be able to more accurately estimate the risk of each investment alternative graphically, as a consequence of their assumed mathematical deficits, they should experience greater difficulty performing the calculations necessary to derive the optimal portfolio allocation and will thus resort to naïve diversification strategies.

### **Definition of Dyslexia and its Prevalence**

Dyslexia is a specific learning disability that is neurobiological in origin. "It is characterized by difficulties with accurate and/or fluent word recognition and by poor spelling or decoding abilities." (Lyon, 2003) There seems to be a common misconception that dyslexia only impacts a person's ability to learn to read; however, this is not true. Kay and Yeo (2003) note that several of the cognitive features of dyslexia such as: working and long-term memory retrieval weakness, difficulty memorizing step-by-step procedures and, sequencing difficulties can affect peoples' success in mathematics and therefore potentially their investment decisions. Dyslexics often experience difficulty memorizing number facts (such as multiplication tables) as well as correctly "doing math operations" (IDA fact sheet, 2008). While conservative estimates of the prevalence of dyslexia range between 3 and 6% of the general population (Singelton, 1999) the International Dyslexia Association believes that 15-20% of the worldwide population may be afflicted (IDA fact sheet, 2008).

In order to investigate how dyslexia is related to asset allocation, one must first establish how these decisions are made by the mainstream population. The literature review in section 2 examines the decision making processes with respect to risk perception and asset allocation decisions. Section 3 describes the hypothesis development by highlighting the potential differences between the risk perception and asset allocation decision-making process of dyslexics as compared to the mainstream population. Section 4 outlines the data collection and study design. Section 5 describes the results. Section 6 presents the conclusions and interpretations of the study and section 7 outlines possible extensions.

## LITERATURE REVIEW

### Problem Solving Methodologies

According to Vessey (1991), all problems can be broken into three components: the problem presentation, the problem solving task and mental representation. Problem presentation is the format in which the information is presented to the individual. The problem solving task is the question which the individual seeks to resolve. The mental representation is the way that the problem is conceptualized in the subject's working memory as a function of both the problem representation and task. For the purposes of this essay, the problem presentation refers to the format of the financial data. The problem solving task is to analyze the risk of the asset in question to determine whether or not one wishes to invest.

Once one has identified the problem, in our case whether or not to undertake an investment opportunity, he or she must determine which problem solving methodology to employ. Vessey (1991) describes the two basic problem solving methodologies: perceptual and analytical. The perceptual or holistic approach to problem solving is based on the idea that subjects examine the entire problem directly rather than explicitly examining each element (Amer, 1991). This approach allows the subject to make associations based on perceived relationships in the data (Vessey, 1991). Conversely, a subject using an analytic or linear problem solving methodology would begin by decomposing the problem into its component parts and examining each sequentially (Amer, 1991). This information processing strategy requires subjects to extract discrete values which are then used in computational data analysis (Vessey, 1991).

Financial data are commonly presented either in graphic or tabular form. Normally graphs illustrate trends in performance, while actual performance statistics, such as accounting statements, are reported in tabular form. A good deal of research has been conducted on the impact that data representation has on the problem solving methodology employed. Vessey (1991) explicitly distinguishes between judgment and choice. As he explains it, judgment requires the subject to make a decision concerning a number of alternatives in a set while choice requires one to select the most preferable alternative. With respect to financial decisions, risk perception is a judgment while asset allocation is a choice. Rosen and Rosenkoetter (1976) show that as a consequence of this division, judgments tend to result from a holistic approach whereas choices result from an analytical process. This finding implies that while subjects derive their risk perceptions by examining trends in performance, their actual asset allocation decisions are more likely to stem from direct data analysis.

### The Impact of Data Presentation Formats

We have all heard the expression, "a picture is worth a thousand words". To this end Larkin and Simon (1987) document that graphs emphasize the relationships between data points because they preserve the geometric and topological relations of the data. Briggs et al. (1988) argue that graphical representations are preferable for tasks which require spatial reasoning such as looking for patterns in data. It has also been shown that graphs are preferable for summarizing data, showing trends and relationships over time and detecting deviations in the data (Jarvenpaa and Dickson, 1988). On the other hand, tabular based representations are superior for symbolic tasks which require data extraction and calculation (Vessey and Galletta, 1991). Since tables are symbolic representations of discrete data, they facilitate the analytical processes (Vessey, 1991). Taking these

findings into account, it has been theorized that graphical representations should be preferable for depicting spatial data and making judgments (i.e. risk perception), while tabular representations should be superior for tasks involving symbolic logic where the subject is required to make a choice (i.e. asset allocation). This is the essence of the theory of cognitive fit proposed by Vessey (1991).

The theory of cognitive fit argues that the method by which information is presented to a subject can influence the way that this information is processed. According to this theory the individual problem solvers' information processing is more efficient and effective when they are able to employ the appropriate mental representations (i.e. graphs for spatial tasks and tables for symbolic tasks). Empirical tests of this theory have had mixed results. Amer (1991) examines the impact of graphical vs. tabular data representations on a subject's ability to determine whether a firm had violated its debt covenant (a choice). The subjects were given information concerning the firm's debt position, size, liquidity, earnings and interest coverage presented in tabular and 3 different graphical representations: bar graphs, polygon display and facial simulation. He found significantly different decision accuracy across the different data representations with the polygon and face graphics producing the worst results. In a similar study conducted by Frownfelter-Lohrke (1998), subjects were asked to predict the firm's financial position in the coming year (a spatial task), as well as forecast the firm's EPS in the following year (a symbolic task) using graphic, tabular and combined data. Her findings do not support the theory of cognitive fit with regard to decision accuracy; however, both of these decisions can be classified as judgments and her results do show that the graphical group completed the spatial task fastest while the tabular group completed the symbolic task slowest as one would predict when examining the tasks from a judgment/choice perspective.

### **Risk Perception**

As discussed above, people derive their risk perceptions by examining trends in performance; therefore, visual biases which influence the interpretation of trends should impact a subject's risk perception. Raghubir and Das (2003) investigate whether people exhibit biases when examining stock information in graphic form. They hypothesize that people sample the local maxima and minima of a series and use this as a source of information to make investment related judgments. Because stocks with longer (shorter) runs have higher (lower) maxima and lower (higher) minima they are perceived as being more risky. The use of an information source as a tool for making a judgment depends on the presence and "diagnosticity" of alternative information sources (Feldman and Lynch, 1988). Local maxima and minima is one source of information a person can use to judge the overall return and risk of a stock. If local maxima (minima) are over-sampled relative to local minima (maxima) the trend line would be biased upward (downward) causing the subject to increase (decrease) the perception of the risk. Consistent with this idea, Raghubir and Das (2003) find that stocks with longer runs are perceived as riskier.

Behavioral biases have also been shown to impact risk perception. Koonce et al. (2004) hypothesize that investors view risk as a function of both behavioral and statistical based components. They propose that individuals judge the risk of financial items by considering both the likelihood of positive and negative outcomes as well as their degree of worry and controllability. Their study focuses specifically on the impacts of potential loss outcomes, and Slovic's measures of dread and the unknown. The potential loss outcome refers to the range of possible losses. Higher (lower) potential loss outcomes lead to greater (lesser) perceived risk. According to Slovic (1987) risk perceptions are a function of "dread" and the "unknown". Dread captures the degree of control

a person has over the item as well as the amount of worry and catastrophic potential associated with it, while the unknown refers to how well the item and/or its impact are understood by the subject. Koonce et al. (2004) found that subjects' quantified loss outcome expectations were influenced by their risk ratings resulting from the dread and unknown measures. Specifically they note that the potential loss outcome has an indirect effect on perceived risk via its influence on the subject's feeling of dread associated with the financial item in question. Their results are robust to the use of either low context qualitative disclosures such as press releases and brokerage reports as well as more detailed reports such as SEC required filings.

Another commonly researched behavioral phenomena is the representative heuristic. The representative heuristic, as defined by Kahnemann and Tversky (1974) is the tendency for a subject to rely too heavily on stereotypes or "available" information when making decisions regardless of the size of the sample and, to seek out information that supports their point of view and discount information which runs contrary to it. With regards to financial decisions, these tendencies can lead people to infer that current short term trends will continue into the long term, ignoring the tendency for reversion to the mean, and often resulting in biased judgments. To illustrate this phenomenon, DeBont (1992) finds that long-term earnings forecasts by securities analysts tend to be biased in the direction of recent success.

### **Asset Allocation Decisions**

Bodie and Crane (1997) present a list of commonly accepted investment principles promulgated by investment advisors and academics alike. They argue that funds saved for retirement should primarily be invested in equities and long term fixed income securities. It is also suggested that investors diversify their total portfolio across asset classes with the equity portion diversified across industries and companies. With respect to age, they sight the popular adage that the proportion of peoples' equity holdings should be 100% minus their age. In general it is thought that the recommended fraction of equity holdings should increase with wealth and marital status (when both partners are employed) and decline with age. The commonly sighted argument for the equity-wealth relationship is that wealthier individuals are more capable of bearing the increased risk associated with equities (Agnew et al., 2003; Bodie and Crane, 1997; Bahandan and Deves, 2008). The marriage-equity relationship is based on the idea that married couples are able to shoulder the risk of equity holdings because they can diversify across labor market shocks (Bodie and Crane, 1997).

Based on a survey of 916 TIAA-CREFF members, Bodie and Crane (1997) find that age and net wealth do in fact impact equity holding as the theories suggest. A similar study by Agnew et al. (2003) supports these findings. Based on a study of trading activity of 6,778 401(k) plan participants, they find that equity allocations are higher among males, higher income, and married investors and lower among older investors. More recently, Bhandari and Deaves (2008) find that the stock-bond mix is impacted by gender, age and income with younger, higher earning males holding the largest proportion of equity. The age-equity relationship is studied by Ameriks and Zeldes (2001) who classify this relationship as non-monotonic, initially increasing then decreasing over an individual's investment life cycle. Bhandari and Deaves (2008) argue that this relationship exists because while investors tend to decrease their equity holding as they age, they increase their equity exposure as they approach retirement because the returns associated with the higher risk of the equity increases their ability to retire sooner.

As discussed previously, mean-variance theory holds that investors should maximize their expected utility of wealth subject to a given level of risk tolerance. An efficient allocation is produced when investors construct a portfolio which produces the highest expected return for a given level of risk. According to this line of reasoning, an investor should not be concerned with the number of assets in his (her) portfolio, but rather its risk-return profile, as such, the fraction of equity funds offered should not affect the chosen allocation as long as the offerings are sufficiently diverse. However, Benartzi and Thaler (2001) show that when faced with a list of potential investment opportunities, their survey participants tended to naively diversify by simply dividing their contributions evenly across the offered funds i.e.: choose an allocation of  $1/n$  where  $n$ = the total number of funds available. They document that, as a consequence of this tendency, the proportion of the investor's portfolio allocated toward stocks (bonds) is highly correlated with the number of equity (debt) offerings available and may thus result in investment choices which are more (less) risky than the subject intended<sup>1</sup>. More recently, Huberman and Jiang (2006) investigated this phenomenon on a sample of 600 401(k) plans. They identified and investigated two versions of the  $1/n$  hypothesis: the classic version examined by Benartzi and Thaler (2001) whereby individuals simply allocated their contributions equally across all funds offered, and the "framing" version whereby participants tend to use more funds when their plan offers them more and allocate proportionally more money to equity funds when the fraction of equity offerings is greater. Huberman and Jiang (2006) found that, consistent with the first version, 1/3 of participants allocated their money evenly across the funds that they chose. On the other hand they note that investors typically chose to invest in 3-4 funds regardless of the number available which is inconsistent with the second interpretation.

A recent study by Bahndan and Deaves (2008) evaluated the investment allocation acumen of 1,992 Canadian defined contribution pension fund members based on their asset allocation consistency (AAC). The participants AAC was determined based on a set of two asset allocation exercises with varying choices. In the first trial, the participants were asked to allocate their funds across a corporate bond fund, a government bond fund, and a stock fund. The second trial choices were a bond fund, a growth stock fund, and a value stock fund. The allocations were defined as AAC if the proportion of debt and equity holding remained the same across the two trials as opposed to fluctuating as a consequence of the division of debt and equity choices as one would expect for an investor following a naïve  $1/n$  strategy. The authors found investors with higher income, and greater investment experience were AAC. While their findings also indicated that female participants were less likely to be AAC, this finding can be explained by the fact that the females in the sample also tended to have lower levels of wealth and have less investment experience. They also found that being AAC is associated with a higher sensitivity to risk taking with aging, such that the equity exposure of an AAC investor declines by roughly 1% per year as advocated by the 100% minus your age rule for debt-equity allocations.

## **HYPOTHESIS DEVELOPMENT**

According to traditional financial theory, people should construct their 401(k) allocations by first examining the risk and return of each investment alternative; then, using that information, create a portfolio which maximizes expected return relative to their own degree of risk tolerance. Let's begin by analyzing each component of this question. Recall that Vessey (1991) states that

---

<sup>1</sup> It should be noted that Benartzi and Thaler (2001) do not claim that the  $1/n$  fund selection strategy is necessarily inefficient since the allocation may still lie on the efficient frontier.

each problem can be broken down into three components: the problem presentation, the problem solving task and the mental representation of the problem. In the case of 401(k) planning the problem presentation usually takes the form of “info sheets” which are distributed by a company’s HR department and contain graphical and/or tabular presentations of risk and return for the investment in question. The problem solving task faced by the individual is two fold: first he or she must analyze the risk of each alternative, then choose an appropriate allocation. The individual’s mental representation, or conceptualization of the allocation question in their working memory, is formed as a function of these two elements. The problem solving methodology employed by the individual and his/her ability to accurately solve the problem are fundamentally linked to the problem presentation and mental representation respectively.

As discussed above graphical representations are preferable for depicting spatial data, such as patterns and trends, and facilitating judgments such as risk perception (Jarvenpaa and Dickerson, 1988). On the other hand, tabular representations are superior for tasks which require discrete data analysis and computation (Vessey and Galletta, 1991), such as the choice of an optimal 401(k) allocation. Taking this into account, in a perfectly rational world, one would expect an individual to analyze the risk of each investment alternative graphically then choose their allocations by computing the variance-covariance matrix to form the optimal portfolio<sup>2</sup> using tabular data. Now, consider how dyslexia may impact this process.

Several studies have explored the visual-spatial abilities of dyslexics with mixed results, due in part to ambiguities in their respective methodologies. In an article describing the neurological manifestations of dyslexia Stein (2001) argues that dyslexics are holistic (perceptual) rather than linear (analytical) thinkers who have a distinct ability to “see the big picture.” He goes so far as to propose that this ability may explain why dyslexia has survived through human evolution despite the fact it puts the affected individuals at a distinct disadvantage in other areas. Using an unusual method, von Karolyi et al. (2003) found that dyslexics exhibit superior visual spatial ability at the global level as compared to the control group. Their subjects were asked to examine line drawings of figures and determine whether the represented objects could exist in a 3 dimensional space. In order to distinguish between possible and impossible objects, one must examine the figure in its entirety (globally) to recognize conflicting or ambiguous connections<sup>3</sup>. They found that their dyslexic subjects performed superior to the control group both in term of accuracy and speed. Bacon et al. (2007) investigated the strategies employed by subjects in a syllogistic task. They found that while most non-dyslexic subjects rely on a verbal approach, the majority of dyslexic participants employed a spatial approach. Interestingly, they note comparable performance when analyzing abstract content, but poorer performance on the part of the dyslexic participants when examining visually concrete materials. This finding is very telling for our purposes because graphs can be characterized as an abstract form of data representation while tables are concrete.

Dyslexics experience difficulty with number sequencing, memorizing number facts and, “doing math operations” (Kay and Yeo, 2003; IDA fact sheet, 2008). They are also susceptible to working memory retrieval deficits (Kay and Yeo, 2003). As a consequence of these factors, it is hypothesized that dyslexics will have difficulty forming an accurate mental representation of risk

---

<sup>2</sup> Or by examining the betas of the various potential portfolio components to accomplish the same goal

<sup>3</sup> An example of an impossible figure is the “Ascending and Descending” work by MC Escher where subjects appear to be climbing up and down a winding staircase.



and return when they are presented with data in tabular form. If one cannot accurately conceptualize data, then it is impossible to correctly interpret or apply it.

Hypothesis 1: Dyslexics are worse than their peers at accurately assessing the risk of an asset when the data are presented in tabular form.

On the other hand, dyslexics are holistic learners with superior visual-spatial skills (Stein, 2001; von Karolyi et al. 2003) therefore; they should have an advantage when it comes to interpreting data presented in graphical form.

Hypothesis 2: Dyslexics are as good as, if not superior to, their peers at accurately assessing the risk of an asset when the data are presented in graphical form.

With respect to the 401(k) asset allocation decision making process these hypotheses would suggest that while dyslexics may be able to accurately estimate the risk of each investment alternative, as a consequence of their potential mathematical deficits, they should experience great difficulty performing the calculations necessary to derive the optimal portfolio allocation.

Hypothesis 3: Dyslexics are less able to accurately select the optimal portfolio allocation consistent with their degree of risk tolerance when presented with data in tabular form.

So how do dyslexics make their portfolio allocations? Probably the same way that the vast majority of the population does, by relying on rules of thumb and naïve diversification strategies<sup>4</sup>! The two most oft cited forms of naïve diversification are the framing and conditional 1/n hypotheses (Benartzi and Thaler, 2001; Huberman and Jiang, 2006). Under the framing version, individuals simply invest an equal proportion of their portfolios into each of the available investment alternatives. The conditional version is slightly more sophisticated, and not necessarily inefficient. Investors resorting to it will choose a subset of the available investment alternatives and allocate their portfolio evenly across those.

I hypothesize that if a dyslexic person is presented with tabular data only and told to select an “optimal allocation by diversifying across the investment alternatives” as Vanguard’s website suggests; he or she is likely to resort to the framing version of 1/n and allocate equally across the alternatives. This result would probably arise from pure frustration at looking at seemingly meaningless numbers and a naïve understanding of the term diversity as “spreading risk”.

Hypothesis 4: Dyslexics are likely to rely on the framing version of the 1/n heuristic when presented with data in tabular form.

## **SURVEY DESIGN**

This case study examines relationship of dyslexia to an individual’s risk perception and asset allocation decisions across various informational presentations. The subjects, students a large

---

<sup>4</sup> Since all of the participants in this study are college students and thus approximately the same age, none of the age based theories are examined

Midwestern university, were divided into two groups: dyslexic students (defined as students identified by the university's disabilities services department who have been documented with a specific reading disability) and a matched control sample of mainstream students. The matching sample will be constructed to mirror the dyslexic sample as closely as possible on the basis of gender, academic standing and, number of finance, accounting and/or economics classes taken.

Subjects were asked to imagine that they have just started a new job and are setting up their 401(k) plan allocations<sup>5</sup>. Since the subjects will have a wide variety of academic and practical backgrounds, they will be provided with a brief (1 page<sup>6</sup>) introduction to stocks, bonds, mutual funds and 401(k) planning similar to information readily obtained on Fidelity and Vanguard's 401(k) websites<sup>7</sup>. A copy of this introduction is in Appendix 1. While the number of actual 401(k) allocation choices range from 4-59 (Iyengar and Kamenica, 2008), the number of choices provided in the experimental literature range from 2-19;<sup>8</sup> consistent with this, subjects were presented with 5 investment choices. The following investment alternatives were selected from Vanguard's website:

Vanguard Fund Name	Vanguard Fund Symbol	Fund Name used in Study
Prime Money Market Fund	VMMXX	Money Market Fund
Long Term Bond Index	VBLTX	Long Term Bond Fund
500 Index General Stock Fund	VFINX	Stock Fund
REIT Index General Stock Fund	VGSIX	Real Estate Fund
Global Equity International Fund	VHGEX	International Fund

Each subject was provided with a set of 5 "info sheets", one for each investment alternative. A sample info sheet appears in Appendix 1. These info sheets are modeled after those distributed by firms HR departments for the purpose of setting up 401(k) contributions and allocations. A brief perusal of these materials shows that they typically contain graphical and/or tabular displays of 10 years worth of annual and either monthly or quarterly prices, as well as a brief description of the funds' strategy, objectives and fees.

A great deal of research has been done concerning whether investors' evaluation of risk and expectations of returns are influenced by the format in which information is presented. Since traditional mean-variance theory holds that asset allocation decisions are made by maximizing returns relative to risk, it is important to establish that each is stated as clearly as possible. With respect to graphical displays of risk, Cleveland and McGill (1986) find that line graphs, bar charts,

<sup>5</sup> While 401(k) contributions are obviously an equally important decision with regards to retirement planning, they will not be studied in this essay. This essay uses risk tolerance as a control variable to examine the impact of dyslexia on risk perception and asset allocation; however, contribution decisions are inextricably linked to risk tolerance and thus will not add any additional value to this study.

<sup>6</sup> Dyslexic subjects were offered the opportunity to have this information presented to them verbally.

<sup>7</sup> The purpose of this paper is to examine the impact of dyslexia on asset allocation decisions; therefore, the tax implications of the 401(k) contributions was not be covered in either the introductory information provided to the subjects or in the study itself.

<sup>8</sup> (Benartzi and Thaler, 2001; Koonce et al., 2004; Weber et al., 2005; Sundali and Guerrero, 2006)

histograms and dot charts are most effective at accurately communicating the magnitude of risk. Similarly, Hollands and Spence (1992) show that trends are best analyzed with line graphs. With respect to other information, Weber et al. (2005) find that knowledge of name and asset type also impacts a person's perception of risk and expected returns. Consistent with these findings, the info sheets used in this case study contain names and descriptions of the strategy and objectives of the fund in question taken directly from Vanguard's website and all visual representations of risk and return are in the form of line graphs.

In order to examine the impact of information presentation on the dyslexic subjects risk perceptions and asset allocations the cross subject information conditions vary as follows:

- Condition 1: Subjects' info sheets contain only graphical presentations of risk and return
- Condition 2: Subjects' info sheets contain only tabular presentations of risk and return

Based on this information subjects were first asked to analyze the risk of each investment alternative then, construct a portfolio for their hypothetical 401(k). Following Weber et al. (2005), the impact of the information presentation on a subject's risk perception will be analyzed through both volatility estimates and rankings. The subjects were asked to estimate the volatility of each alternative by predicting the median, upper bound (10th percentile) and lower bound (90<sup>th</sup> percentile) values of a \$100 investment in each alternative after one year. Their estimates are then compared to the cross-sectional volatility forecasts calculated using the sample data based on the Pearson and Tukey's three point approximation:

Let subject  $i$ 's return projections for investment opportunity  $j$  be:

median value  $Y_{ij}^{0.5}$

lower bound (10th%)  $Y_{ij}^{0.1}$

upper bound (90th%)  $Y_{ij}^{0.9}$

$$Vol(point)_{ij} = \sqrt{[3(Y_{ij}^{0.1}/100)^2 + .4(Y_{ij}^{0.5}/100)^2 + 3(Y_{ij}^{0.9}/100)^2] - (mean_{ij})^2}$$

$$Where : mean_{ij} = .3(Y_{ij}^{0.1}/100) + .4(Y_{ij}^{0.5}/100) + 3(Y_{ij}^{0.9}/100)$$

Assuming log normal returns, mean and standard derivations of the quarterly and annual returns for each alternative over the 10 year period covered were calculated in the info sheets and use them to compute the historic volatility of asset  $j$  as follows:

$$Vol(hist)_j = \sqrt{e^{2\mu} (e^{\sigma^2 t} - 1)}$$

$$Where : mean(hist)_j = e^{\mu}$$

According to hypothesis 1, the dyslexic subjects should be less able to interpret the data presented in tabular form. If the subjects were unable to recognize the trends and volatility which document the asset's risk they may have simply resorted to guessing; therefore, this hypothesis was tested by examining the dispersion of their predictions.

### Testing Hypothesis 1

Ho: The dyslexic sub-group's volatility estimates will be less or equally widely dispersed relative to the control group under condition 2 than under condition 1.

Ha: The dyslexic sub-group's volatility estimates will be more widely dispersed relative to the control group under condition 2 than under condition 1.

Next, the subjects were asked to rank the risk of each investment opportunity on a scale of 1 (no risk) to 9 (highest risk). Their estimates to the logarithm of asset's historical volatility were compared:  $\ln(100 \cdot Vol(hist)_j)$

According to hypothesis 2, the dyslexic subjects should be as accurate if not superior to the controls at identifying the risk of the assets when presented with data in graphical form.

### Testing Hypothesis 2

Ho<sub>1</sub>: The dyslexic sub-group's risk estimates will be less than or equally accurate relative to the control group under condition 1

Ha<sub>1</sub>: The dyslexic sub-group's risk estimates will be more accurate relative to the control group under condition 1

Ho<sub>2</sub>: The dyslexic sub-group's risk estimates will be more accurate relative to the control group under condition 2

Ha<sub>2</sub>: The dyslexic sub-group's risk estimates will be less than or equally accurate relative to the control group under condition 2

Finally, the subjects were instructed to construct their portfolio allocations by specifying which investments they would like to include in their 401(k) as well as the percentage allocated to each investment alternative.

In order to account for the impact of risk tolerance on each subject's optimal allocation decision, the Garbel-Lytton 13 item assessment was administered. Factor analysis indicates that the assessment measures 3 components of risk tolerance: investment risk, risk comfort and experience and speculative risk with several questions corresponding to each dimension (Garbel and Lytton, 1999, 2003). The validity of this particular test was examined in two separate studies, the original study in 1999 which established the technique and a follow-up study in 2003 which re-examined its effectiveness. The 1999 study consisted of a sample of 1,075 subjects employed as either faculty or staff at a southern state university. The sample was found to be representative of the population on most 4-year college campuses and had thus obtained higher education, income and socioeconomic levels on average than the general population. The resulting scores from this sample range from 20 to 63 with a mean score of 37, a standard deviation of 6.4 and a reliability estimate of .78 (Garbel and Lytton, 1999). Litwin (1995) established the minimum recommended target reliability estimate at .7. Since the Garbel-Lytton 13 item assessment's reliability estimate exceeds this threshold it should accurately reflect a subject's degree of financial risk tolerance. The follow-up study was conducted via email to a more broadly distributed population and consisted of 378 respondents. The scores for this sample ranged from 16 to 41 with a mean of 28.83, a standard deviation of 4.49 and a reliability estimate of .7 (Garbel and Lytton, 2003). This second study examined the reliability and perceived validity of the technique by documenting a statistically significant positive (negative)

empirical relationship between the subject's score and the percentage of their equity (debt) holdings (Garbel and Lytton, 2003).

According to hypothesis 3, dyslexics will be less able to select a portfolio allocation consistent with their degree of risk tolerance when presented with data in tabular form. Whether dyslexia is related to the subject's allocation decisions by examining the efficiency of their allocations relative to the mean-variance efficient allocation and the subject's degree of risk tolerance was the focus of hypothesis 3.

### Testing Hypothesis 3

Ho<sub>1</sub>: The dyslexic sub-group's Sharpe Ratios will be smaller or equal to the control group's under condition 1

Ha<sub>1</sub>: The dyslexic sub-group's Sharpe Ratios will be larger than the control group's under condition 1

Ho<sub>2</sub>: The dyslexic sub-group's Sharpe Ratios will be larger than the control group's under condition 2

Ha<sub>2</sub>: The dyslexic sub-group's Sharpe Ratios will be smaller or equal to the control group's under condition 2

Ho<sub>3</sub>: The dyslexic sub-group's RARs will be larger or equal to the control group's under condition 1

Ha<sub>3</sub>: The dyslexic sub-group's RARs will be smaller than the control group's under condition 1

Ho<sub>4</sub>: The dyslexic sub-group's RARs will be smaller than the control group's under condition 2

Ha<sub>4</sub>: The dyslexic sub-group's RARs will be larger or equal to the control group's under condition 2

Ho<sub>5</sub>: The dyslexic sub-group's allocations will not plot on the efficient frontier under condition 1

Ha<sub>5</sub>: The dyslexic sub-group's allocations will plot on the efficient frontier under condition 1

Ho<sub>6</sub>: The dyslexic sub-group's allocations will plot on the efficient frontier under condition 2

Ha<sub>6</sub>: The dyslexic sub-group's allocations will not plot on the efficient frontier under condition 2

Ho<sub>7</sub>: The higher the dyslexic subgroup's degree of risk tolerance, the higher the standard deviation of their portfolio allocation. This result will hold to a greater or equal degree under condition 2 than under condition 1

Ha<sub>7</sub>: The higher the dyslexic subgroup's degree of risk tolerance, the higher the standard deviation of their portfolio allocation. This result will hold to a greater or equal degree under condition 1 than under condition 2

Finally, it was examined whether dyslexics were more likely to rely on naïve diversification strategies. This strategy says that individuals invest an equal proportion of their portfolios into each of the available investment alternatives. Since there are 5 investment alternatives in this study, a subject following this approach would allocate 20% of his portfolio to each. It was expected that the dyslexic subjects would be more likely to rely on this heuristic, especially when presented with only tabular data.

### Testing Hypothesis 4

Ho<sub>1</sub>: An equal or smaller proportion of the dyslexic subgroup will allocate 20% to each investment alternative under condition 2

Ha<sub>1</sub> A greater proportion of the dyslexic subgroup will allocate 20% to each investment alternative under condition 2

Ho<sub>2</sub>: A greater proportion of the dyslexic subgroup will allocate 20% to each investment alternative under condition 1

Ha<sub>2</sub>: An equal or smaller proportion of the dyslexic subgroup will allocate 20% to each investment alternative under condition 1

At the conclusion of the exercise, the subjects were asked to fill out a questionnaire detailing their thought process for each decision. This questionnaire should help to flesh out the results by providing the participants a chance to explain their strategies.

## RESULTS

### Survey Participants

Fliers were sent via email to 130 dyslexic students registered with the Office of Services for Students with Disabilities at a large Midwestern university. During the first two weeks 2 people responded so follow up emails were sent. The final sample size consists of 10 students: 5 dyslexic<sup>9</sup> and 5 controls. Due to the small sample size this became a pilot case study. The control sample was selected to match the dyslexic sample as closely as possible on the basis of gender, major, year in school, and the number of finance, economics and accounting courses taken. Both samples consist of: 2 juniors, 2 seniors and 1 graduate student. Two of the dyslexic sample (and their corresponding control matches) are education majors, 2 are liberal arts majors and 1 is an engineering major. Two of the participants (and their corresponding matches) have taken economics classes; none have taken any finance or accounting courses. Seven of the participants were female, 3 were male. An exact match for subject 2 could not be located, a dyslexic, senior, male liberal arts major who has taken two economics classes. His control match is a female who meets all of the other criteria. The dyslexic sample subjects received \$20 compensation; the control subjects received \$10.

Two dyslexic subjects and their matching controls were given graphic data. Three of the dyslexic subjects and their matching controls were given tabular data. There is no specific reason for this random 3-2 split across conditions 1 and 2.

The dyslexic sample averaged 28.2 minutes to complete the study, the control sample averaged 26.6 minutes. In general the participants under condition 2 (tabular data) took longer to complete the study than those under condition 1 (graphic data). Under condition 1 the dyslexic (control) sample averaged 23 (21) minutes, while the condition 2 dyslexic (control) sample averaged 35 (30). There appears to be no correlation between the amount of time spent on this study and the results in any section.

The subjects were asked to rate their math skills on a scale of 1 (poor) – 10 (excellent). The averages for the dyslexic and control samples were 5.4 and 5 respectively. The rating break downs were relatively consistent across the sub-groups. The condition 1 dyslexic (control) sample rating averaged 6.5 (7) and the condition 2 dyslexic (control) sample rating averaged 4.67 (3.67). There appears to be no consistent correlation between the subject's math skills and their performance in any section of this study.

---

<sup>9</sup> A response rate of 3.8%.

## Volatility Estimates

The subject's estimates of each asset's cross-sectional volatility, calculated using Pearson and Tukey's three point approximation, were compared to the historic annual volatility of each investment opportunity over the 10 year sample period. Subject 8, a dyslexic subject under condition 2 failed to provide dollar estimates for the stock, real estate and international funds. The aggregate estimates for these funds are based on the remaining 2 participants in that subgroup. The results are shown in Table 1 and Graph Set 1 in Appendix 2.

All subjects grossly underestimated the volatility of every investment alternative. Based on the estimates given, none of the subgroups were able to correctly assess the relative volatility of the funds. The aggregate control group came the closest; however, they overestimated the volatility of the international fund relative to the stock fund. The dyslexic and control samples under condition 1 provided roughly the same estimate of the relative volatilities. These estimates were more accurate than those of their condition 2 counterparts. Within condition 2, the control sample was more accurate than the dyslexic sample. The dyslexic sample under condition 2 was the worst performing sub-group.

Hypothesis 1 predicts that the dyslexic sub-group's volatility estimates would be more widely dispersed relative to the control group under condition 2 than under condition 1. The dyslexic subsample's standard deviation of estimates are higher for all funds under condition 2 than under condition 1, but less high than the control sample under condition 2. This finding provides mild support for hypothesis 1.

## Risk Estimates

The subjects were asked to rank the risk of each investment opportunity on a scale of 1 (no risk) to 9 (highest risk). This was compared to the logarithm of asset's historical volatility. The results are shown in Table 2 and Graph set 2 in Appendix 2. The sample in aggregate overestimated the risk of all the funds. The aggregate dyslexic sample overestimated the risk of the money market, long term bond and real estate funds but underestimated the risk of the stock and international funds. The aggregate control sample, on the other hand, underestimated the risk of the stock, real estate and international funds and overestimated the risk of the money market and long-term bond funds. The dyslexic sample on average was more accurate than the control at identifying the risk of the money market, stock and international funds; however, the standard deviation of their responses was also greater. Both the dyslexic and control samples under condition 2 more accurately estimated the risk of the money market and long term bond funds, while their condition 1 counterparts were more accurate with respect to the stock fund. The only points of deviation between the sub-samples were the real estate and the international funds. The risk of real estate fund was more accurately estimated by the dyslexics under condition 1 and the controls under condition 2 and visa versa for the international fund.

Hypothesis 2 predicts that the dyslexic sub-group's risk estimates will be more accurate relative to the control group under condition 1 and less accurate under condition 2. These hypothesis are not supported by the data. None of the subgroups were consistently more accurate than the others.

## Allocations

The subjects were asked to construct their portfolio allocations by specifying which investments they would like to include as well as the percentage allocated to each investment alternative. The influence of dyslexia on subjects' allocation decisions is determined by examining the efficiency of their allocations relative to the mean-variance efficient allocation and the subject's degree of risk tolerance. The portfolio Sharpe ratios were calculated for all allocations on both a quarterly and annual basis using both the average and end of period returns on the 10 year constant maturity Treasury bond over the sample period to proxy for the risk free rate of return. The quality of the allocations is analyzed in table 3 in Appendix 2.

The Sharpe ratio<sup>10</sup> captures how well the return of the portfolio compensates the investor for the risk taken; the higher the Sharpe ratio the better the selected allocation (Sharpe, 1966). All of the sample allocations have negative Sharpe ratios. The best allocation was chosen by subject 3, a dyslexic under condition 1. Despite this, in aggregate the control sample allocations were superior to those of the dyslexic sample. The control sample's allocations under condition 2 outperform their condition 1 counterparts. The dyslexic sample on the other hand selected better allocations under condition 1 than under condition 2. Likewise the dyslexic condition 1 subsample outperformed their matched controls.

Hypotheses 3-1&2 predict that the dyslexic sub-group's Sharpe Ratios will be larger relative to the control groups' under condition 1 and smaller under condition 2. The results support these hypotheses.

Like the Sharpe ratio, the return adjusted risk (RAR)<sup>11</sup> is a measure of performance. The RAR adjusts the return of an asset or portfolio to match the return of the market portfolio (Liano and Sanchini, 2009). This measure allows one gauge the performance of portfolio based on risk. If the RAR is less (more) than the risk of the market then the portfolio has out (under) performed relative to the market (Liano and Sanchini, 2009). The RARs for the sample portfolios were calculated using the 10 year constant maturity Treasury bond to proxy for the risk free rate and the S&P500 returns to proxy for the market return. The RARs indicate that, in aggregate; the portfolios constructed by the sample out-performed the market on an annual basis but under performed on a quarterly basis. Based on an analysis of the RARs, the dyslexic samples' allocations out performed those of the control sample in aggregate. The control sample's allocations under condition 1 outperform their condition 2 counterparts. The reserve was true for the dyslexic subsamples. Surprisingly, the aggregate dyslexic subsample under condition 2 preformed the best.

Hypotheses 3-3 &4 say that the dyslexic sub-group's return adjusted risks will be larger relative to the control groups' under condition 2 and smaller condition 1. The results do not support these hypotheses.

The minimum variance frontier was calculated using the quarterly and annual sample data from Vanguard. The capital market line was calculated using both the average and end of period

$$^{10} \text{ Sharpe Ratio} = \frac{R_p - R_f}{\sigma_p}$$

$$^{11} \text{ RAR} = \sigma_p \frac{R_m - R_f}{R_p - R_f}$$



returns on the 10 year constant maturity Treasury bond over the sample period<sup>12</sup>. The sample allocations are plotted relative to the minimum variance frontier and the capital market line in graph 3 in Appendix 3.

None of the selected allocations lie on either the capital market line or the efficient portion of the minimum variance frontier. Only two allocations lie on the frontier at all. These allocations, which lie on the lower half of the frontier, were selected by control subjects under condition 1. This finding is inconsistent with hypothesis 3-5&6 which predicted that the dyslexic sub-group's allocations will plot on the efficient frontier under condition 1 but not under condition 2; although in aggregate the allocations of the dyslexic subjects do lie closer to the frontier under condition 1 than under condition 2.

Hypothesis 3-7 states that the dyslexic subgroup's allocations will be more consistent with their degree of risk tolerance under condition 1 than under condition 2. This relationship is documented in Graph 4 in Appendix 3. The results indicate that this relationship holds nearly equally well for the dyslexic and control samples. This provides mild support for hypothesis 3-7.

### **Allocation Strategies**

The subject's allocations are shown in Graph 5 and in table 4 in appendix 3. None of the subjects chose to allocate their investment evenly across all 5 funds. The aggregate dyslexic subsample under condition 1 came the closest. These results do not support hypothesis 4 which suggests that the dyslexic subjects under condition 2 are more likely to rely on the 1/n naïve diversification strategy.

According to the questionnaire: 5 participants choose assets to minimize their risk, 3 choose assets to maximize their return, 2 chose assets with a mix of return estimates and 2 chose assets that "moved against one another." None of the participants stated that they tried to accomplish both simultaneously. Paradoxically, the subjects who said they picked portfolios to minimize risk chose allocations with a higher average standard deviation than those who didn't (8.67% vs. 7.76%). Similarly, the participants who picked portfolios to maximize return selected portfolios with a lower average annual return than those who didn't follow this strategy (1.82% vs. 1.86%). In aggregate the best portfolio allocation was chosen by those subjects who concentrated more on minimizing the risk of their portfolio.

### **CONCLUSIONS AND INTERPRETATIONS**

Based on a matched sample of 5 dyslexic and mainstream students at the University of Nebraska-Lincoln, this pilot case study examines how dyslexia effects the risk perception and allocation decisions of afflicted individuals through the use of a simulated 401(k) investment allocation exercise. The main hypothesis being tested is that while dyslexics may be able to accurately estimate the risk of each investment alternative graphically, as a consequence of their assumed mathematical deficits, they should experience greater difficulty performing the calculations necessary to derive the optimal portfolio allocation and thus resort to naïve diversification strategies. The results of this study indicate that the dyslexic subjects risk perception and allocation choices were almost universally inferior to their peers. Of course all of these results

---

<sup>12</sup> For consistency, only graphs based on the average annual Treasury bond returns are shown in the paper. The graphs documenting the other forms of treasury data can be found in appendix 3.

must be considered in light of the small sample size and resulting sub-sample sizes. Also, the allocations of the controls given tabular data were superior to those given graphical data. This result is counterintuitive and requires further study.

Following Weber et al. (2005), the impact of the information presentation on a subject's risk perception was analyzed using both volatility estimates and rankings. None of the subjects were able to correctly estimate the volatility of the funds irrespective of their dyslexic status. On the other hand, consistent with Weber et al (2005), the participants (both dyslexic and control) who received graphic data did a better job at estimating a risk ranking. This result was true for both the control and dyslexic subjects though less so for the latter. This finding is troubling because the dyslexic community often advocates the use of graphic data representations to "level the playing field," and yet this does not seem to have been sufficient in this case.

This study shows that dyslexic subjects will not automatically revert to the  $1/n$  naive diversification strategy. The participants who received graphic data chose better allocations than their control matches, but these allocations were not as good as those selected by the controls given tabular data.

The findings suggest that dyslexic individuals should seek investment advice when selecting their 401(k) asset allocations. If no investment advice is available they should rely on graphical data to choose their portfolio allocations.

## **SUGGESTIONS FOR FUTURE RESEARCH**

Due to the small sample size this study's findings are rather inconclusive; sure the dyslexics did badly, but so did everyone else! Without a larger sample it is impossible to determine whether or not any true patterns emerge. The optimal sample size would be 120 subjects, 30 per sub-group. In order to increase the response rate, automating the study and emailing it to the potential participants would be preferred. One potential explanation for the atrocious response rate is that this study was combined with an educational study which required at least a 1 hour time commitment from the subjects. Hopefully unbundling the two will also increase participation. Participation should also be increased if compensation could be increased via a grant.

## **REFERENCES**

- Agnew, J., Balduzzi, P., and Sunden, A. (2003) Portfolio Choice and Trading in a Large 401(k) Plan, *American Economic Review* 93, 193–215
- Amer, T. 1991. "An Experimental Investigation of Multi-cue Financial Information Display and Decision Making." *Journal of Information Systems*. (Fall): 18-34.
- Ameriks, John, and Stephen P. Zeldes. "How Do Household Portfolio Shares Vary With Age?" Working paper, Columbia University, 2000.
- Benartzi, S., and R. Thaler, 2001, Naive Diversification Strategies in Defined Contribution Saving Plans, *American Economic Review*
- Beyond Greed and Fear: Understanding Behavioral Finance and the Psychology of Investing, Boston, MA: Harvard Business School Press, Revised version published 2002, New York: Oxford University Press
- Bhandari, G. and Deaves, R., Misinformed and informed asset allocation decisions of self-directed retirement plan members. *Journal of Economic Psychology*. v29. 473-490.

- Bodie, Zvi, and Dwight B. Crane. 1997. Personal investing: Advice, theory and evidence. *Financial Analysts Journal* 53(6): 13–23.
- Bondt, Werner F. M. and Richard Thaler, 1985, Does the stock market overreact? *Journal of Finance* 40, 793-805.
- Byrne, (1999) *Social Exclusion*, Buckingham:Open University Press  
Ditch, J. et al (1996) *A synthesis of National Family Policies 1994*, York: European Observatory on National Family Policies, University of York
- Frownfelter-Lohrke, C. (1998). "The effects of differing presentations of general purpose financial statements on users' decisions", *Journal of Information Systems*, 12(2), pp 99-107.
- Holden, Sarah, and Jack VanDerhei. (2001). `Contribution Behavior of 401(k) Plan Participants.` *ICI Perspective* 7(4): 1-20 , and *EBRI Issue Brief* 238: 1-20.
- Huberman, Gur, and Wei Jiang. 2006. "Offering versus Choice in 401(K) Plans: Equity Exposure and Number of Funds." *Journal of Finance*, 61(2): 763–801.
- Jarvenpaa, S.L., Dickson, G.W. (1988), "Graphics and managerial decision making: research based guidelines", *Communications of the ACM*, Vol. 31 No.6, pp.764-74.
- Kahneman, D., & Lovallo, D. (1993). Timid choices and bold forecasts: A cognitive perspective on risk-taking. *Management Science*, 39, 17-31.
- Kahneman, D., & Tversky, A. (1979). Prospect theory: An analysis of decisions under risk. *Econometrica*, 47, 313-327.
- Koonce, L., M. Lipe, and M. McAnally. 2005. Judging the risk of financial instruments: Problems and potential remedies. *The Accounting Review* 80 (3): 871-95.
- Larkin, J. & Simon, H. (1987) Why a diagram is (sometimes) worth ten thousand words. *Cognitive Science*, 11:65-99.
- Kartono Liano and Alexandre Sanchini. (2009), Return-adjusted risk, *Journal of Financial Education* 34 (Fall), 94-100
- Lyon, G.R., Shaywitz, S.E., & Shaywitz, B.A. (2003). A definition of dyslexia. *Annals of Dyslexia*, 53, 1-15.
- Olsen, R. A., & Cox, C. M. (2001). The influence of gender on the perception and response to investment risk: The case of professional investors. *The Journal of Psychology and Financial Markets*, 2, 29-36.
- Rosen, L. D., & Rosenkoetter, P. (1976). An eye fixation analysis of choice of judgment with multiattribute stimuli. *Memory and Cognition*, 4, 747–752.
- Sharpe, W. F. (1966). "Mutual Fund Performance". *Journal of Business* 39 (S1): 119–138
- Shlomo Benartzi & Richard H. Thaler, 2001. "Naive Diversification Strategies in Defined Contribution Saving Plans," *American Economic Review*, American Economic Association, vol. 91(1), pages 79-98, March.
- Slovic, P. (1987). Perception of risk. *Science*, 236, 280-285.
- Stein, John (2001-01). "The magnocellular theory of developmental dyslexia.". *Dyslexia* 7 issue1: 12-36
- Sundén, Annika and Brian J. Surette. 1998. "Gender Differences in the Allocation of Assets in Retirement Savings Plans," *American Economic Review Papers and Proceedings* 88(2)
- Vessey, Iris (1991). Cognitive Fit: A Theory-Based Analysis of the Graphs Versus Tables Literature. *Decision Sciences* 22,(2), 219-240.
- Vessey, Iris, Galletta, Dennis (1991). Cognitive Fit: An Empirical Study of Information Acquisition. *Information Systems Research*, 2(1), 63-84.
- von Karolyi et al, *Brain and Language* (2003) 85 427–431

- Wang, P. 1994. Brokers still treat men better than women. *Money*, 23, 108-110.
- Weber, E.U., Siebenmorgen, N. and Weber, M. (2005), Communicating Asset Risk: How Name Recognition and the Format of Historic Volatility Information Affect Risk Perception and Investment Decisions, *Risk Analysis* 25, 597--609.

## APPENDIXES

### Appendix 1: Simulated 401(k) Allocation Exercise

Imagine that it is your first day at a new job. Your supervisor has taken you to the HR department to get you set up. As part of this process, the HR person has handed you the following packet of information and asked you to set up your 401(k).

Step 1: Read the **Introduction to 401(k) Investments**.

Step 2: Complete the **Garbel-Lytton 13 item Assessment of Risk Tolerance**.

Step 3: Use the info sheets provided to fill out the Risk Assessment Sheet for each investment alternative.

Step 4: Select an allocation for your 401(k) based on your analysis of the risk of each investment alternative. You will do so by filling out the Allocation Sheet.

Step 5: Fill out the methodology and demographic questionnaire

Your firm offers 5 investment choices:

- Money Market Fund
- Long Term Bond Fund
- Stock Fund
- Real Estate Fund
- International Fund

The following info sheets will provide you with 10 years worth of annual and quarterly return data for each fund as well as a brief description of fund's strategy and objectives.

#### Introduction to 401(k) Investments

A 401(k) is a type of retirement savings plan. The plan works by authorizing your employer to deduct a certain pre-specified amount of money from your paycheck to invest for retirement. You can decide how this money is invested by choosing from a list of investment options provided by your company. Your investment choices will consist of a list of stock, bond and mutual funds. You can choose to invest in as many or as few funds as you wish and allocate as much or as little as you wish to each fund. The only requirement is that your total allocation must add up to 100%.

A stock represents a share of ownership in a company (ex, a share of IBM). Common stock holders (investors) participate in the gains of the company through share price appreciation and dividend distributions. Dividends can take the form of either cash payouts or additional stock distributions from the company to the shareholders. Stock ownership allows for unlimited gains if the company

does well; however, there is also the chance that you could lose your entire investment if the firm goes bankrupt.

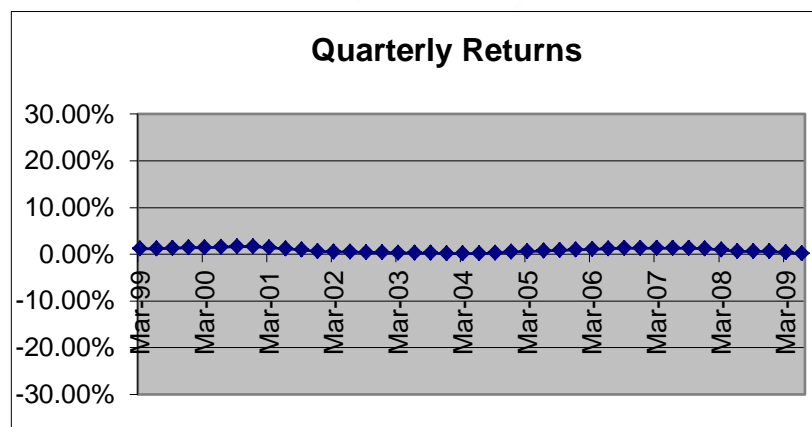
A bond is like a loan that you make to the company which specifies how you are to be paid back over time. More specifically, a bond is a debt security which obligates the company to pay the bond holder interest in periodic installments known as coupon payments, as well as the face value of the bond at its maturity (end date). Debt ownership allows for limited gains since the maximum return that you can receive is specified by the coupon rate. As with a stock investment, there is a chance that you could lose your entire investment in bonds if the company goes bankrupt.

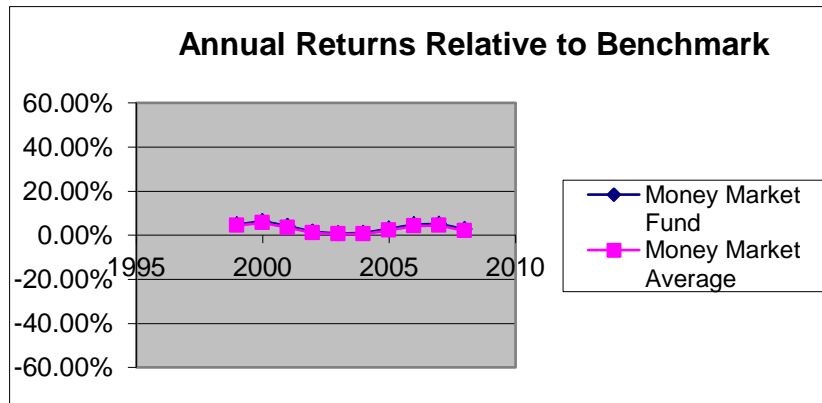
In general, stocks pay a higher rate of return than bonds since their payments are more uncertain. Stocks and bonds from larger domestic companies tend to be safer than those of smaller domestic or international firms. The safest types of bonds are those sold by the US treasury. These bonds have zero default risk meaning that you are guaranteed to earn the quoted return. Overall the more risky the investment, the higher the rate of return paid.

Mutual funds collect money from several investors and invest this money in a pool of stocks and bonds. Each investor shares proportionally in the gains and losses of the fund. Mutual funds offer investors the advantages of diversification and professional portfolio management.

### Sample Asset Description Money Market Fund- Condition 1

**Product Summary:** This is the most conservative type of mutual fund. Its goal is to maintain the \$1 value of its shares while providing income. This fund invests in high-quality, short-term securities. It is an appropriate place for savings that you want to preserve, but also want to earn income on. This fund has typically offered higher yields than bank accounts. It provides convenient access to your savings because you can write checks or transfer money electronically to and from your bank account.





### Money Market Fund- Condition 2

**Product Summary:** This is the most conservative type of mutual fund. Its goal is to maintain the \$1 value of its shares while providing income. This fund invests in high-quality, short-term securities. It is an appropriate place for savings that you want to preserve, but also want to earn income on. This fund has typically offered higher yields than bank accounts. It provides convenient access to your savings because you can write checks or transfer money electronically to and from your bank account.

Year	Money Market Fund					Money Market Average
	First Quarter	Second Quarter	Third Quarter	Fourth Quarter	Year-End Return	Year-End Average
2009	0.33%	0.12%	—	—	—	—
2008	0.96%	0.59%	0.56%	0.64%	2.77%	2.04%
2007	1.26%	1.28%	1.29%	1.21%	5.14%	4.49%
2006	1.05%	1.17%	1.29%	1.29%	4.88%	4.20%
2005	0.55%	0.67%	0.80%	0.95%	3.01%	2.37%
2004	0.19%	0.19%	0.30%	0.42%	1.11%	0.60%
2003	0.28%	0.23%	0.20%	0.19%	0.90%	0.44%
2002	0.46%	0.45%	0.39%	0.35%	1.65%	1.00%
2001	1.43%	1.14%	0.90%	0.63%	4.17%	3.44%
2000	1.41%	1.52%	1.61%	1.61%	6.29%	5.70%
1999	1.18%	1.16%	1.23%	1.35%	5.01%	4.49%

Risk Assessment Sheet (One for each Fund under both conditions)

1. What is your best estimate of the average value of a \$100 investment in this fund after one year? Assume average economic conditions. \_\_\_\_\_
2. Suppose next year is a **bad** economic year, what is your best estimate of the value of that same \$100 value in that case? \_\_\_\_\_
3. Suppose next year is a **great** economic year, what is your best estimate of the value of that same \$100 value in that case? \_\_\_\_\_
4. Rank risk of this investment on a scale of 1(no risk) to 9(highest risk)\_\_\_\_\_

401(k) Allocation Sheet

Now that you have reviewed all of the available data you must make your 401(k) asset allocation decision. You can choose to invest in as many or as few funds as you wish and allocate as much or as little as you wish to each fund. **The only requirement is that your total allocation must add up to 100%.**

Money Market Fund	Long-Term Bond Fund	Stock Fund	Real Estate Fund	International Fund

**Do your percentages add up to 100%?**

Methodology and Demographic Questionnaire

*Circle all the apply or explain in the space provided*

**There are no right or wrong answers!**  
**Remember all information provided will remain strictly confidential**

1. What strategy did you use to estimate the risk of each asset?
  - A) I looked for trends in the graphical (tabular) data
  - B) I examined the volatility of each asset using the graphical (tabular) data
  - C) I examined the performance of each asset relative to its benchmark using the graphical (tabular) data
  - D) Other: \_\_\_\_\_
  
2. How did you decide on your final allocation?

- A) I looked for assets that moved against each other using the graphical (tabular) data
  - C) I choose assets with a different mix of risk estimates
  - E) I divided my allocation evenly across the asset choices
  - F) I choose to allocate more to certain assets to maximize my return
  - G) I choose to allocate more to certain assets to minimize my risk
  - H) Other: \_\_\_\_\_
- 
- 

3. Rate your math skills on a scale of 1(poor) - 10(excellent): \_\_\_\_\_

4. I am a:  
Freshman      Sophomore      Junior      Senior      Grad Student

5. I am a:  
Male      Female

6. What is your major?  
Business      Engineering      Liberal Arts      Sciences      Education

7. Have you ever taken an accounting, finance or economics class and if so how many? \_\_\_\_\_

---

---

8. Do you currently, or have you ever owned any shares of stock?  
Yes      No

9. Do you currently, or have you ever owned any fixed income investments (ex bonds)?  
Yes      No

10. Do you currently, or have you ever invested in a 401(k) plan?    Yes      No



Appendix 2

Table 1: Aggregate Volatility Estimates

	MM	LTB	INDEX	REIT	GLOBAL
<b>vol(hist)j</b>	<b>64.47%</b>	<b>192.53%</b>	<b>274.56%</b>	<b>841.48%</b>	<b>738.75%</b>
<b>Panel A: Mean Estimates</b>					
Dyslexic	26.06%	34.20%	28.35%	28.45%	42.50%
Control	39.09%	30.68%	47.24%	40.10%	108.58%
Dyslexic Graphic	29.41%	31.93%	34.24%	36.72%	39.73%
Dyslexic Tabular	23.82%	35.71%	22.46%	20.18%	45.27%
Control Graphic	29.01%	31.07%	33.97%	36.57%	36.76%
Control Tabular	45.81%	30.43%	56.09%	42.45%	156.47%
<b>Panel B: Standard Deviation of Estimates</b>					
Dyslexic	8.86%	3.77%	13.80%	14.14%	7.96%
Control	14.89%	3.71%	27.24%	6.55%	158.46%
Dyslexic Graphic	0.94%	0.78%	1.91%	1.66%	1.56%
Dyslexic Tabular	11.74%	4.43%	20.72%	18.00%	12.52%
Control Graphic	0.34%	0.65%	2.32%	2.46%	5.99%
Control Tabular	16.56%	5.21%	34.47%	7.88%	203.97%

Graph Set 1: Volatility Estimates

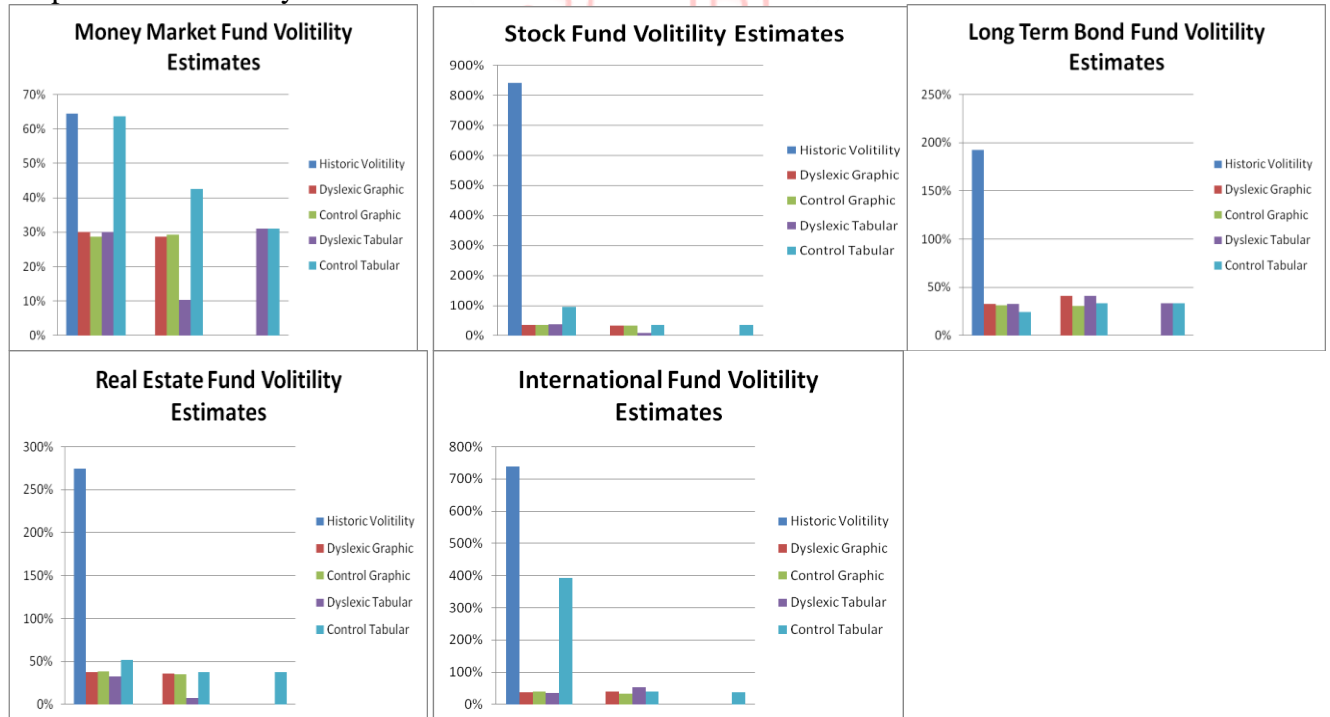
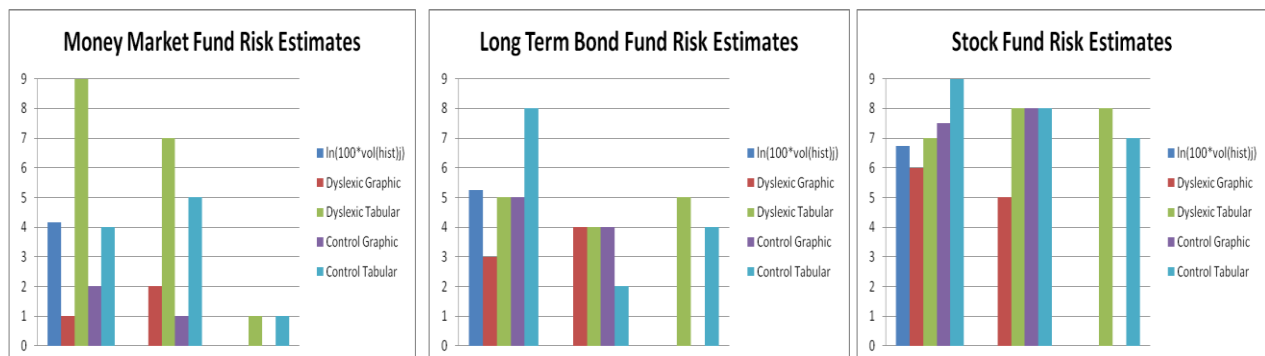


Table 2: Aggregate Risk Estimates

	MM	LTB	INDEX	REIT	GLOBAL
<b>ln(100*vol(hist,j))</b>	<b>4.1662444</b>	<b>5.260256</b>	<b>5.6151785</b>	<b>6.7351578</b>	<b>6.604954</b>
<b>Panel A: Mean Estimates</b>					
Dyslexic	4.0000	4.2000	6.8000	6.4000	7.2000
Control	2.6000	4.6000	7.9000	6.8000	8.2000
Dyslexic Graphic	1.5000	3.5000	5.5000	7.5000	9.0000
Dyslexic Tabular	5.6667	4.6667	7.6667	5.6667	6.0000
Control Graphic	1.5000	4.5000	7.7500	7.0000	8.0000
Control Tabular	3.3333	4.6667	8.0000	6.6667	8.3333
<b>Panel B: Standard Deviation of Estimates</b>					
Dyslexic	374.2%	83.7%	130.4%	240.8%	268.3%
Control	181.7%	219.1%	74.2%	130.4%	44.7%
Dyslexic Graphic	70.7%	70.7%	70.7%	70.7%	0.0%
Dyslexic Tabular	416.3%	57.7%	57.7%	305.5%	300.0%
Control Graphic	70.7%	70.7%	35.4%	141.4%	0.0%
Control Tabular	208.2%	305.5%	100.0%	152.8%	57.7%
<b>Panel C: Differences</b>					
Dyslexic	0.17	1.06	-1.18	0.34	-0.60
Control	1.57	0.66	-2.28	-0.06	-1.60
Dyslexic Graphic	2.67	1.76	0.12	-0.76	-2.40
Dyslexic Tabular	-1.50	0.59	-2.05	1.07	0.60
Control Graphic	2.67	0.76	-2.13	-0.26	-1.40
Control Tabular	0.83	0.59	-2.38	0.07	-1.73

Graph Set 2: Risk Estimates



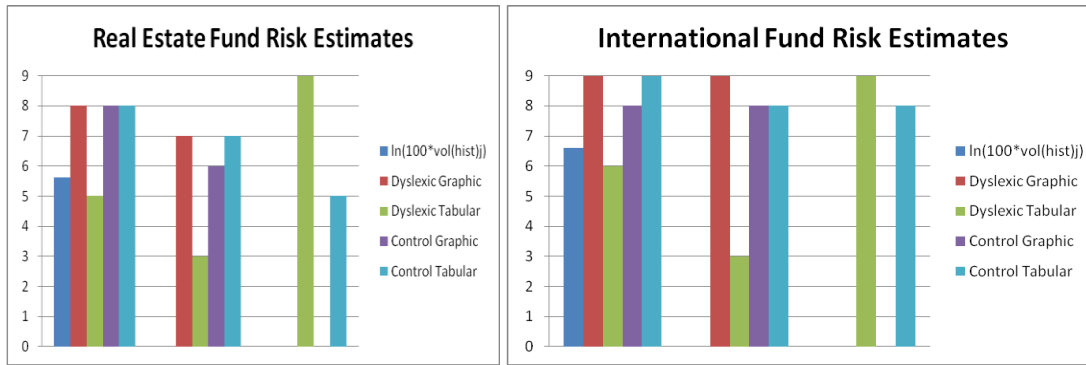
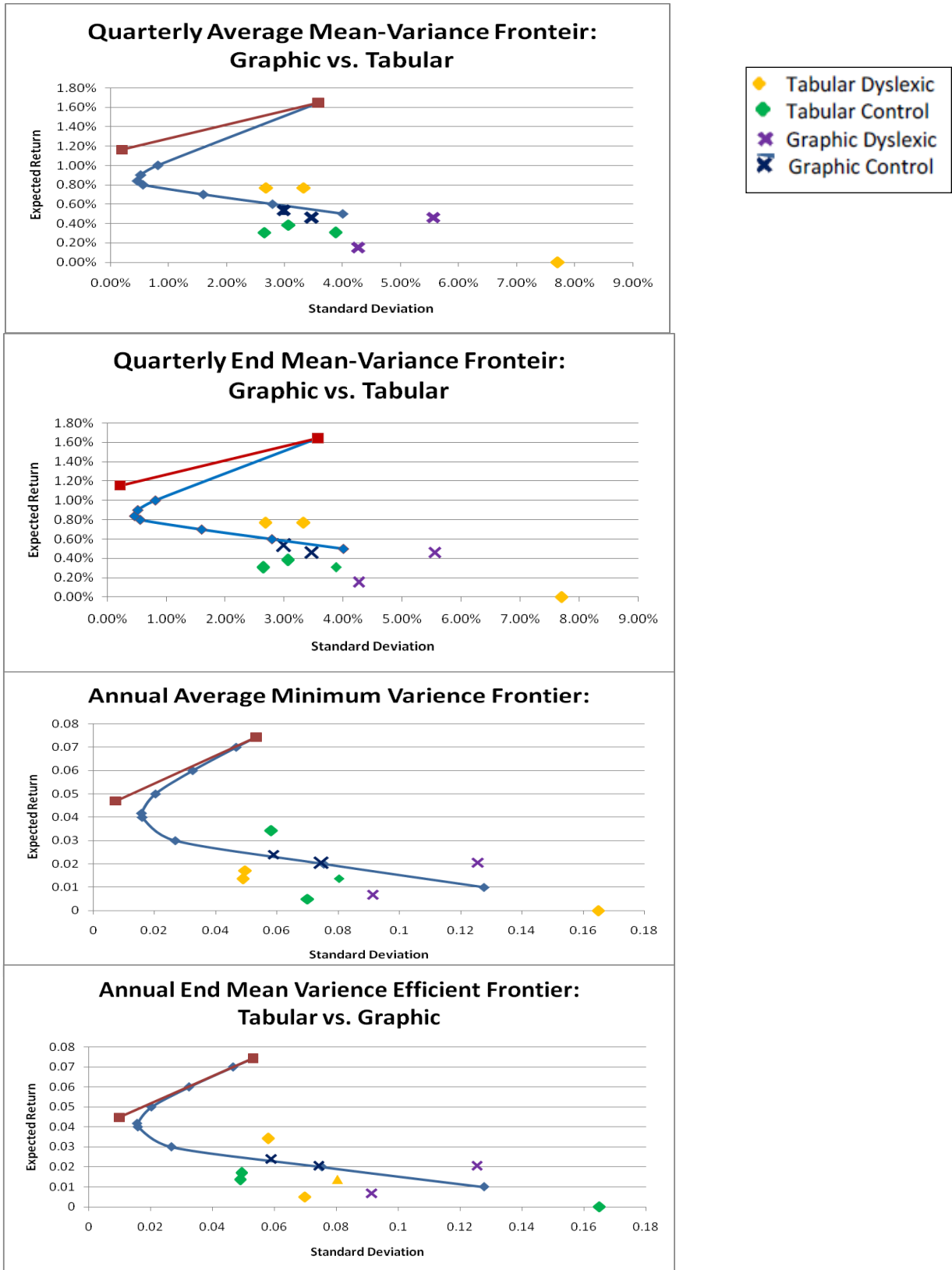


Table 3: Aggregate Portfolio comparisons

<b>Panel A: Sharpe Ratios</b>				
	Annual Avg SR	Annual End SR	Quarterly Avg SR	Quarterly End SR
Dyslexic	-0.443471259	-0.413674021	-0.217917644	-0.185021297
Control	-0.312577217	-0.278770195	-0.179210738	-0.176462384
Dyslexic Graphic	-0.324932645	-0.303452994	-0.181036116	-0.17920619
Dyslexic Tabular	-0.522497002	-0.487154706	-0.242505329	-0.188898036
Control Graphic	-0.37332086	-0.338750668	-0.205567909	-0.202812096
Control Tabular	-0.272081455	-0.238783213	-0.161639291	-0.15889591
<b>Panel B: Return Adjusted Risk<sup>13</sup></b>				
		Annual End RAR	Quarterly Avg RAR	Quarterly End RAR
<b>S&amp;P 500 STD</b>		<b>20.45%</b>	<b>0.72%</b>	<b>1.16%</b>
Dyslexic		11.1%	6.1%	6.1%
Control		15.7%	7.0%	7.0%
Dyslexic Graphic		14.4%	7.2%	7.2%
Dyslexic Tabular		8.9%	5.4%	5.4%
Control Graphic		11.2%	5.8%	5.8%
Control Tabular		18.7%	7.8%	7.9%

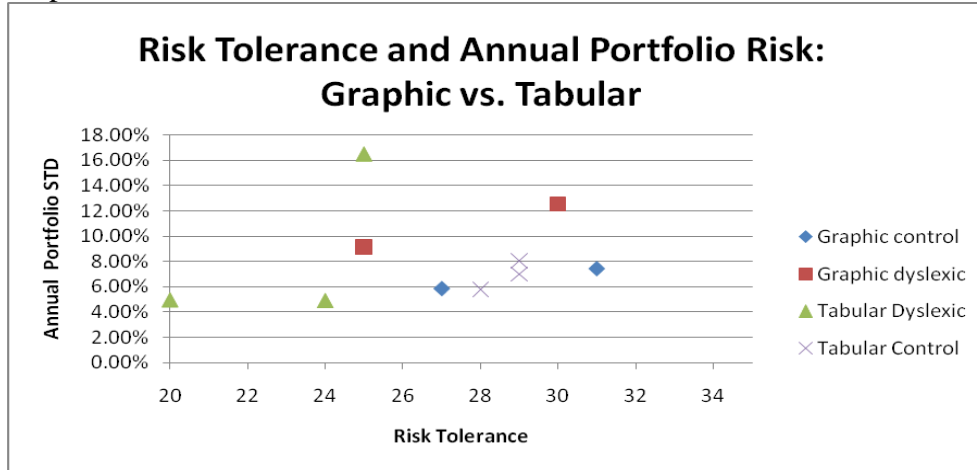
<sup>13</sup> S&P 500 data was downloaded from StandardandPoor.com. The annualized data was only available for end of each year.

Appendix 3: Frontier graphs



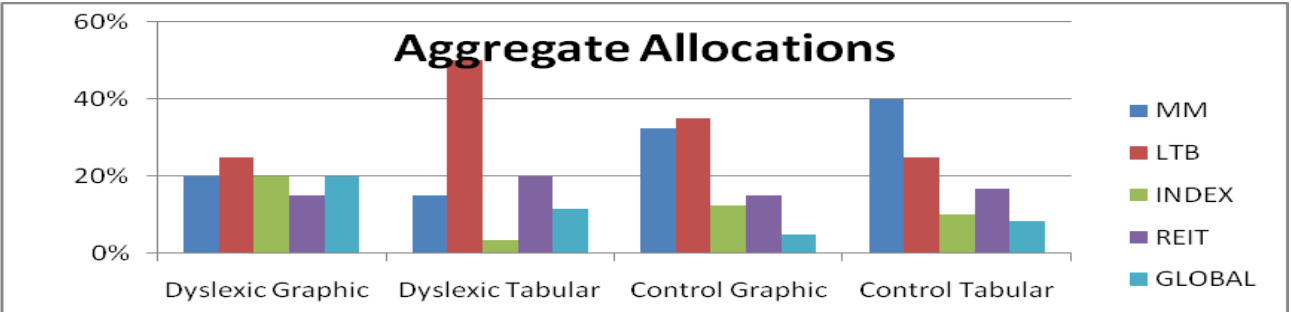
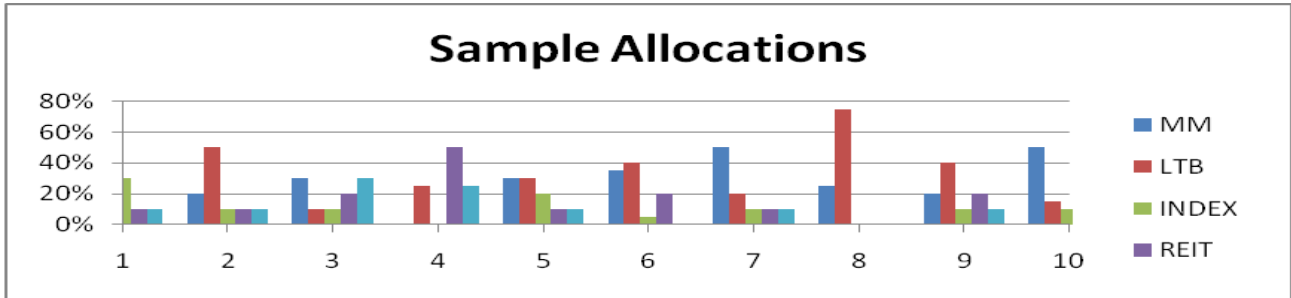
Appendix 4: Risk and Allocations

Graph 3:



Allocations:

subject	MM	LTB	INDEX	REIT	GLOBAL	Quarterly				Annual			
						Port mean	Port STD	Avg SR	End SR	Port Mean	Port STD	Avg SR	End SR
1	10%	40%	30%	10%	10%	0.15%	4.27%	-0.236	-0.234	0.68%	9.13%	-0.439	-0.414
2	20%	50%	10%	10%	10%	0.31%	2.65%	-0.323	-0.320	1.37%	4.90%	-0.679	-0.633
3	30%	10%	10%	20%	30%	0.46%	5.56%	-0.126	-0.124	2.05%	12.55%	-0.211	-0.193
4	0%	25%	0%	50%	25%	0.00%	7.71%	-0.151	0.004	0.00%	16.49%	-0.285	-0.271
5	30%	30%	20%	10%	10%	0.46%	3.46%	-0.202	-0.200	2.05%	7.43%	-0.356	-0.325
6	35%	40%	5%	20%	0%	0.54%	2.99%	-0.209	-0.206	2.40%	5.89%	-0.391	-0.352
7	50%	20%	10%	10%	10%	0.77%	2.68%	-0.147	-0.143	3.42%	5.81%	-0.220	-0.180
8	25%	75%	0%	0%	0%	0.38%	3.06%	-0.254	-0.251	1.71%	4.95%	-0.603	-0.557
9	20%	40%	10%	20%	10%	0.31%	3.88%	-0.220	-0.218	1.37%	8.03%	-0.414	-0.386
10	50%	15%	10%	20%	5%	0.77%	3.33%	-0.118	-0.116	3.42%	6.98%	-0.182	-0.150



J B

S B